



SPARROWS

CASE STUDY

# CRANE DAVIT ARM CHANGEOUT WITH SPIDER CRANE

Utilisation of the right equipment and specialist project management for a changeout minimises crane downtime

**BENEFITS**

Specialist advice to minimise crane downtime

Rental of equipment for a cost effective solution

Experienced and competent teams to ensure quick delivery



**ASSET**

Fixed platform

**LOCATION**

UK

## CHALLENGE

Our client wished to changeout a Gross Overload Protection (GOP) system as part of their five yearly Planned Maintenance Routine (PMR). The crane's design requires the davit arm for the changeout process, but on inspection, it was found to be corroded and condemned.

We were then contracted to plan and conduct a changeout of the davit arm so that the GOP could then be replaced. A URW-1006 spider crane was selected as the most suitable option for completing the job, as the client had stipulated that any crane downtime should not exceed four continual days.

## SOLUTION

We assessed three options for the project and recommended a spider crane, which the customer approved.

The two unviable options were:

- Scaffold access: construction time was too long, which would have resulted in the crane being out of service for at least 14 consecutive days
- Using the North crane for lifts: with the North crane falling about 2 m short of the davit arm some scaffolding would still be required and the resulting downtime would be too long.

The end solution utilised a combination of a spider crane and a rope access team, which did not require any scaffolding. All lifts for the davit arm changeout were performed using the spider crane.

Unfavourable weather conditions gave us only three suitable days to conduct the changeout within a two week window, so the affected crane was only out of service for three days. Even though bad weather conditions meant the spider crane was hired for longer, the minimal downtime of crane operations made it the most cost effective option.

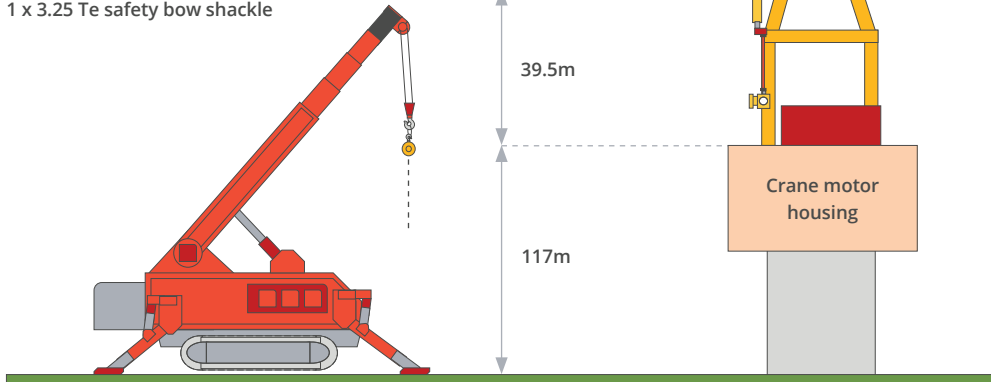
## SUMMARY

- Project management
- Rope access services
- Engineering
- Rental of URW-1006 spider crane – 4-off outrigger stands and 32-off timber frame with dimensions 2400 mm x 1250 mm x 120 mm (L x W x H)
- Rental of supporting equipment.

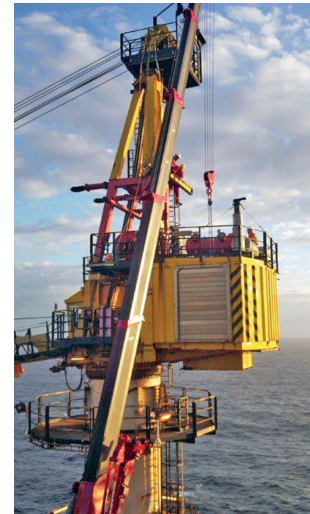
1.

### CB1 (attached to spider crane hook)

- 1 x 1 Te 10 m chain block
- 1 x 8.8 Te masterlink
- 1 x 3.25 Te safety bow shackle



2.



3.



1. Work scope set-up.
2. Replacement of South crane davit.
3. Fully extended spider crane boom.

## DELIVERY ASSURED

For more information please visit [www.altradsparrows.com](http://www.altradsparrows.com)